

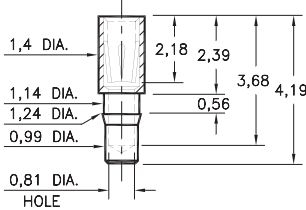
PIN RECEPTACLES

FOR 0,38 - 0,64 DIAMETER PINS

0385

0385-0-15-XX-43-XX-10-0

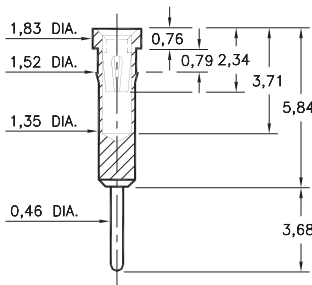
Press-fit in 1,17 mounting hole



4001

4001-0-15-XX-43-XX-04-0

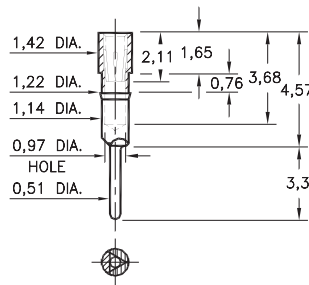
Press-fit in 1,45 mounting hole



1782

1782-0-15-XX-43-XX-04-0

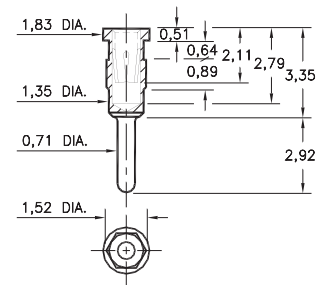
Press-fit in 1,14 mounting hole



5960

5960-0-15-XX-43-XX-04-0

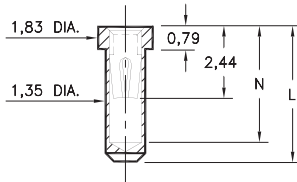
Hex press-fit in 1,45 plated through-hole



1401/3185

XXXX-0-15-XX-30-XX-10-0

Solder mount in 1,4 min. mounting hole
Also available on 16mm wide carrier tape:
1,700 parts per 330mm reel
Order as: XXXX-0-57-XX-30-XX-10-0

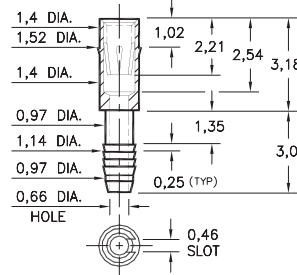


Basic Part Number	Length L	Depth N
1401-0	4,19	3,68
3185-0	3,30	2,77

4310

4310-0-31-XX-43-XX-04-0

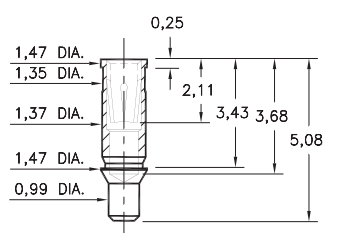
Compliant press-fit in 1,02 ± 0,08 plated through-hole. For 2,29 → 3,30 thick board



1385

1385-0-15-XX-43-XX-10-0

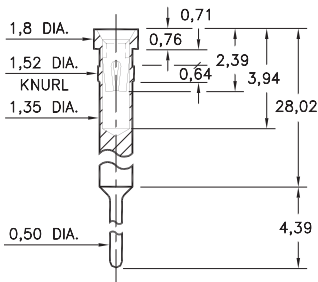
Surface mount



3018

3018-0-15-XX-30-XX-04-0

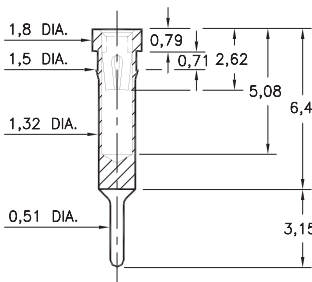
Press-fit in 1,45 mounting hole



8852

8852-0-15-XX-30-XX-04-0

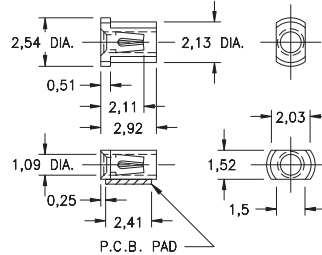
Press-fit in 1,42 mounting hole



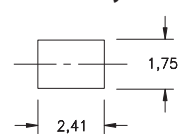
3907

3907-0-18-XX-30-XX-10-0

Surface mount
Also available on 12mm wide carrier tape:
4,000 parts per 330mm reel
Order as: 3907-0-58-XX-30-XX-10-0



P.C.B. Layout



SPECIFICATIONS:

Shell Material: Brass Alloy 360, 1/2 Hard

Contact Material: Beryllium Copper Alloy 172, HT

Dimensions: Millimeters

Tolerances On: Lengths: ± 0,13

Diameters: ± 0,051

Angles: ± 2°



ORDER CODE: XXXX - X - XX - XX - XX - XX - XX - 0

BASIC PART #

SPECIFY SHELL FINISH:

- 01 5,08µm TIN/LEAD OVER NICKEL
- ◆ 80 5,08µm TIN OVER NICKEL (RoHS)
- ◆ 15 0,25µm GOLD OVER NICKEL (RoHS)

SPECIFY CONTACT FINISH:

- 02 2,54µm TIN/LEAD OVER NICKEL
- ◆ 84 2,54µm TIN OVER NICKEL (RoHS)
- ◆ 27 0,76µm GOLD OVER NICKEL (RoHS)

SELECT CONTACT:

#30, #35 or #43 CONTACT (DATA ON PAGE 253 & 254)
(For alternate contact choices, see groups B and C on page 248)

