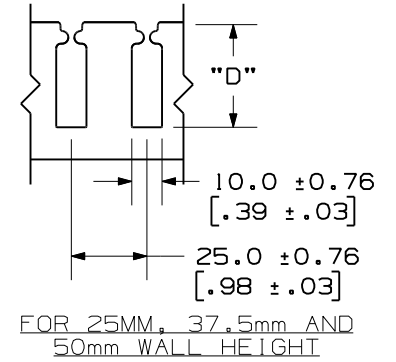
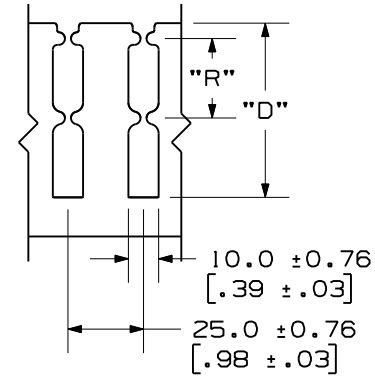
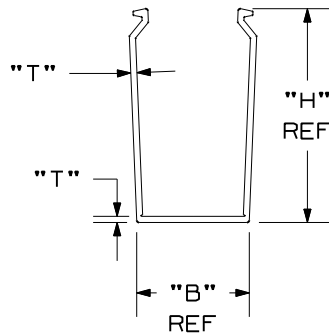
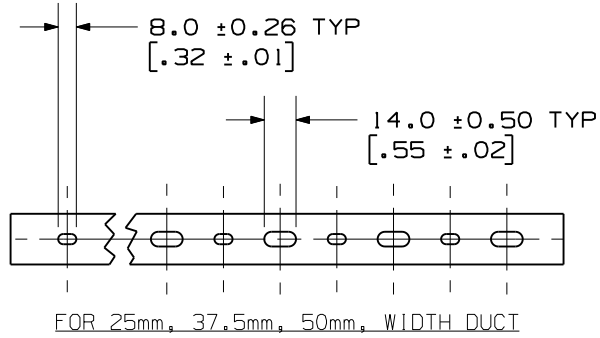


THIS COPY IS PROVIDED ON A RESTRICTED BASIS AND IS NOT TO BE USED IN ANY WAY DETRIMENTAL TO THE INTERESTS OF PANDUIT CORP.

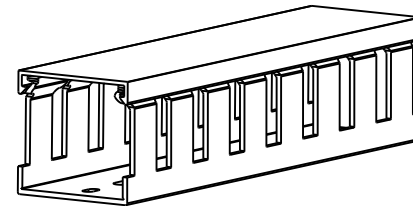
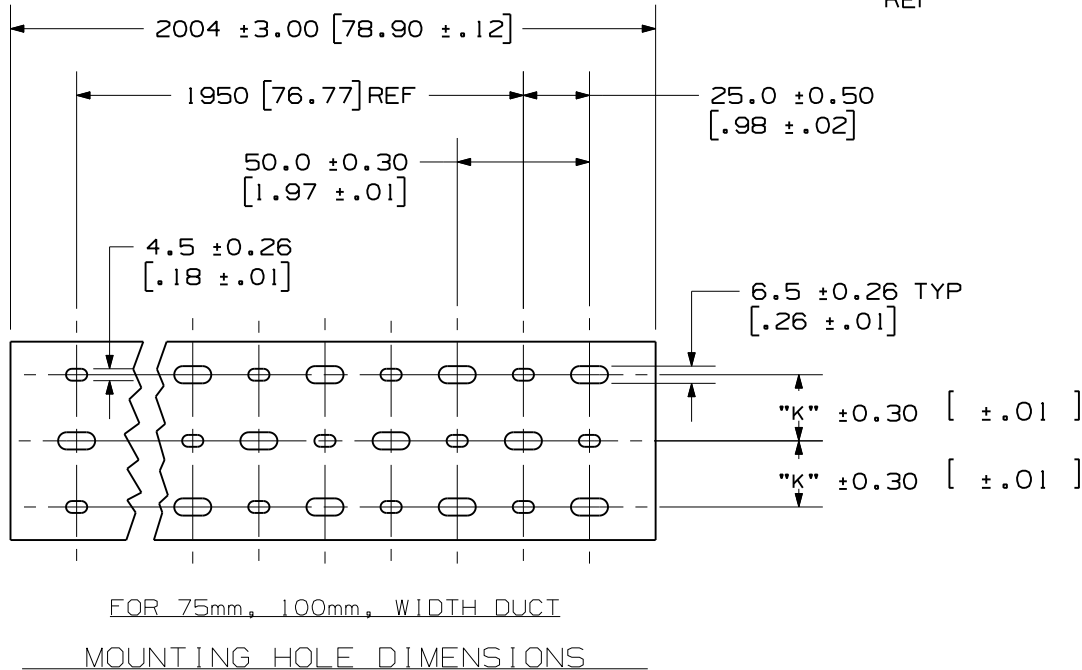


FOR 75mm AND 100mm
WALL HEIGHT

SIDE WALL DIMENSIONS

NOTES:

- "B" MEASURED AT BASE.
- STANDARD LENGTH: 2.004 METER.
- SEE CURRENT CATALOG FOR PART NUMBER DESIGNATIONS FOR TYPE, COLOR, AND LENGTH.
- DUCT TYPE "TNC" PACKAGED WITH TYPE "TNC" COVER.
- DIMENSIONS ARE METRIC (INCHES).



CHANNEL EXAMPLE:
TNC 37 X 50 LG 2
TYPE WIDE HIGH COLOR (LIGHT GRAY) LENGTH (m)

REV	DATE	BY	CHK	APR	DESCRIPTION	ECN
1	2/1/12	JCST	MRJS	RAMI	A. CORRECTED "T" DIMENSION (SHT 2) (25X37, 25X75, 50X100, 100X75, 100X100)	38539AG-DC
R	11/7/11	JCST	MRJS	RAMI	DRAWING RELEASED TO PRODUCTION	38539AG-DC

TITLE WIRING DUCT AND COVER TYPE "TNC" METRIC					
CUSTOMER DRAWING					
ITEM REVISION					
DATASET FILE NAME D38539AG_DC_TNC/00A					
UNLESS OTHERWISE SPECIFIED, DIMENSIONAL TOLERANCES ARE: mm (IN)					
.x : 2.54 (.1)		.xxx : .127 (.005)			
.xx : .25 (.01)		ANGLES : 5 °			
DRAWN BY JCST			DATE 10/24/11		CHK MRJS
SCALE NONE			THIRD ANGLE PROJECTION		
MATERIAL: LOW-SMOKE HALOGEN-FREE MODIFIED PPE-HIPS BLEND					
DRAWING NUMBER: 38539AG-DC					
SHT 1 OF 3					SIZE A

D10100DA/08

2

1

THIS COPY IS PROVIDED ON A RESTRICTED BASIS AND IS NOT TO BE USED IN ANY WAY DETRIMENTAL TO THE INTERESTS OF PANDUIT CORP.



PROFILE DIMENSION				
NOMINAL DUCT SIZE (W X H)	B REF	H REF	T	T TOL.
* 25 X 25	24.6 (.97)	20.5 (.81)	1.4 (.06)	±.26 (.010)
25 X 37	24.6 (.97)	33.0 (1.30)	1.8 (.07)	±.26 (.010)
* 25 X 50	24.6 (.97)	45.5 (1.79)	2.0 (.08)	±.30 (.012)
25 X 75	24.6 (.97)	70.5 (2.78)	2.0 (.08)	±.30 (.012)
37 X 37	37.1 (1.46)	33.0 (1.30)	1.8 (.07)	±.30 (.012)
* 37 X 50	37.1 (1.46)	45.5 (1.79)	2.0 (.08)	±.30 (.012)
37 X 75	37.1 (1.46)	70.5 (2.78)	2.0 (.08)	±.36 (.014)
50 X 50	49.6 (1.95)	45.5 (1.79)	2.0 (.08)	±.30 (.012)
* 50 X 75	49.6 (1.95)	70.5 (2.78)	2.0 (.08)	±.36 (.014)
* 50 X 100	49.6 (1.95)	95.5 (3.76)	2.3 (.09)	±.40 (.016)
75 X 75	74.6 (2.94)	70.5 (2.78)	2.0 (.08)	±.40 (.016)
100 X 50	99.6 (3.92)	45.5 (1.79)	2.0 (.08)	±.40 (.016)
100 X 75	99.6 (3.92)	70.5 (2.78)	2.0 (.08)	±.50 (.020)
* 100 X 100	99.6 (3.92)	95.5 (3.76)	2.3 (.09)	±.50 (.020)

* = NON-STANDARD SIZE

MOUNTING HOLE	
NOMINAL DUCT WIDTH	K ±.5 (.02)
25	----
37	----
50	----
75	25.0 (.98)
100	25.0 (.98)

SLOT DIMENSION		
NOMINAL DUCT HEIGHT	D ±.8 (.03)	R ±.75 (.02)
25	13.6 (.54)	-----
37	24.7 (.97)	-----
50	34.8 (1.37)	-----
75	57.6 (2.27)	26.26 (1.03)
100	81.0 (3.19)	38.0 (1.50)

ALL DIMENSIONS ARE MM (IN).

REV	DATE	BY	CHK	APR	DESCRIPTION	ECN
1	2/1/12	JCST	MRJS	RAMI	SEE SHEET 1 FOR REVISIONS	38539AG-DC
R	11/7/11	JCST	MRJS	RAMI	SEE SHEET 1 FOR REVISIONS	38539AG-DC

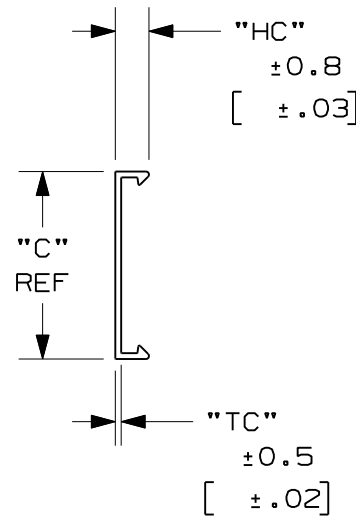
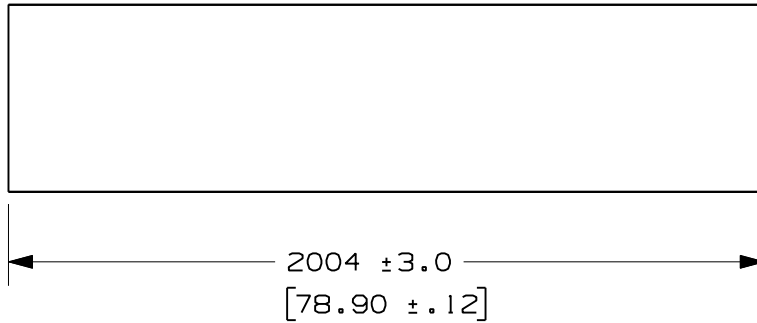
TITLE WIRING DUCT AND COVER TYPE "TNC" METRIC					
CUSTOMER DRAWING					
ITEM REVISION			PANDUIT TM		
DATASET FILE NAME D38539AG_DC_TNC/00A					
UNLESS OTHERWISE SPECIFIED, DIMENSIONAL TOLERANCES ARE: mm (IN) .x : 2.54 (.1) .xxx : .127 (.005) .xx : .25 (.01) ANGLES : 5 °			MATERIAL : LOW-SMOKE HALOGEN-FREE MODIFIED PPE-HIPS BLEND		
DRAWN BY: JCST DATE: 10/24/11 CHK: MRJS SCALE: NONE			DRAWING NUMBER: 38539AG-DC		
THIRD ANGLE PROJECTION			SHT 2 OF 3		
SIZE: A					

2

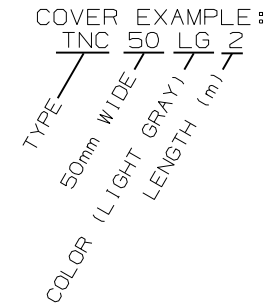
1

D10100DA/08

THIS COPY IS PROVIDED ON A RESTRICTED BASIS AND IS NOT TO BE USED IN ANY WAY DETRIMENTAL TO THE INTERESTS OF PANDUIT CORP.



NOMINAL DUCT SIZE (W)	C REF	HC	TC
25	24.6 (.97)	8.9 (.35)	1.30 (.05)
37	37.1 (1.46)	8.9 (.35)	1.30 (.05)
50	49.6 (1.95)	8.9 (.35)	1.40 (.06)
75	74.6 (2.94)	9.4 (.37)	1.40 (.06)
100	99.6 (3.92)	9.4 (.37)	1.40 (.06)



ALL DIMENSIONS ARE MM (IN).

REV	DATE	BY	CHK	APR	DESCRIPTION	ECN
1	2/1/12	JCST	MRJS	RAMI	SEE SHEET 1 FOR REVISIONS	38539AG-DC
R	11/7/11	JCST	MRJS	RAMI	SEE SHEET 1 FOR REVISIONS	38539AG-DC

<p>TITLE WIRING DUCT AND COVER TYPE "TNC" METRIC CUSTOMER DRAWING</p>					
<p>ITEM REVISION</p>				<p>PANDUITTM</p>	
<p>DATASET FILE NAME D38539AG_DC_TNC/00A</p>				<p>MATERIAL: LOW-SMOKE HALOGEN-FREE MODIFIED PPE-HIPS BLEND</p>	
<p>UNLESS OTHERWISE SPECIFIED, DIMENSIONAL TOLERANCES ARE: mm (IN) .x : 2.54 (.1) .xxx : .127 (.005) .xx : .25 (.01) ANGLES : 5 °</p>				<p>DRAWING NUMBER: 38539AG-DC</p>	
<p>THIRD ANGLE PROJECTION</p>	<p>DRAWN BY JCST</p>	<p>DATE 10/24/11</p>	<p>CHK MRJS</p>	<p>SCALE NONE</p>	<p>SIZE A</p>
<p>SHT 3 OF 3</p>				<p>3</p>	

D10100DA/08