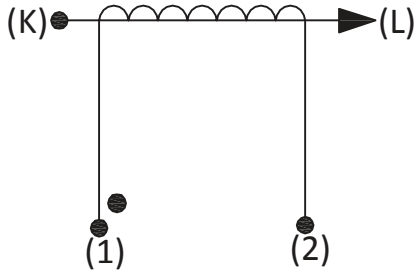




Product Type	Current Transformer
AMGIS Part Number	CT1075

SCHEMATIC:



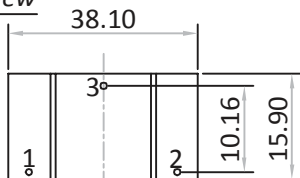
ELECTRICAL SPECIFICATION:

Rated input current = 75Amps  
 Primary to Secondary isolation = 2500VAC  
 Operating Frequency = 50 / 60 Hz  
 Turns Ratio = 1 : 1000  
 DC Resistance = 24.00 Ω  
 Output Voltage = 7.5V @ 75A / 100Ω, 0.5700W  
 I<sub>o</sub> @ V<sub>rms</sub> : 9.26V = 1520μArms  
 Ratio Correction factor (RCF\*) = 1.001@10% (Multiply current reading by this factor to compensate for transformer losses)

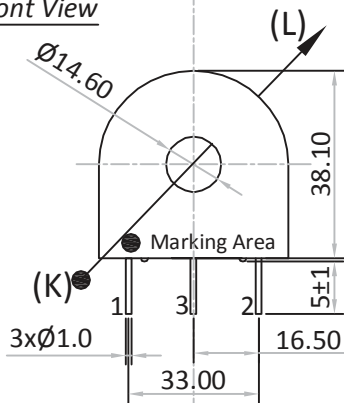
Volt/Amp at rated I <sub>p</sub> for different loads			
100Ω	500Ω	2000Ω	5000Ω
0.10	0.39	0.57	0.65

MECHANICAL SPECIFICATION:

Pin Side View



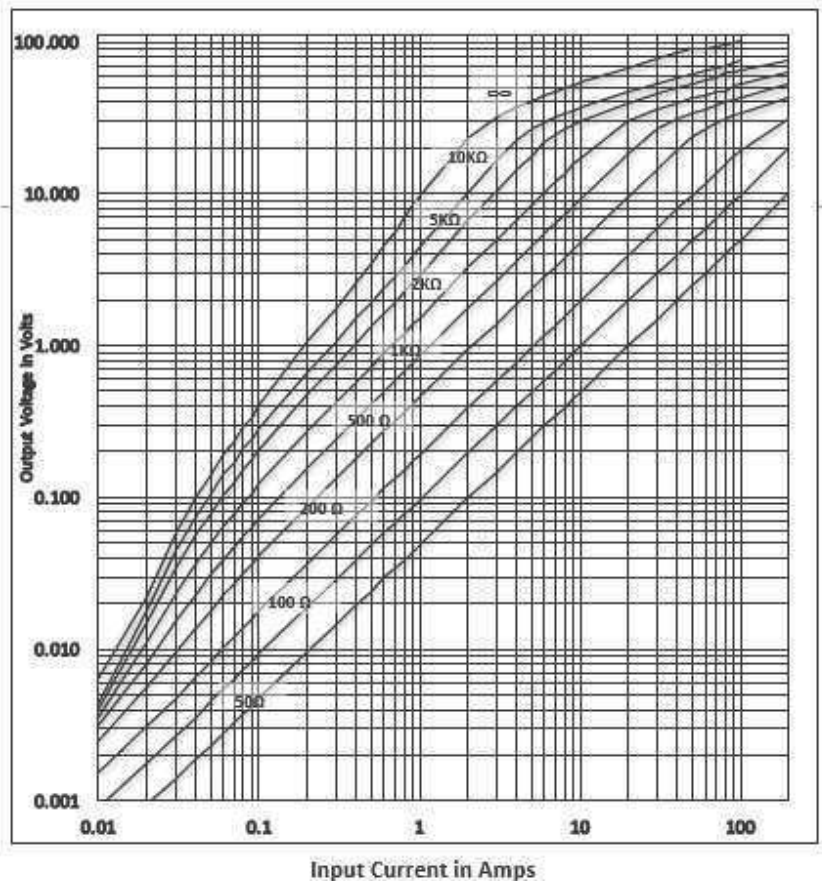
Front View



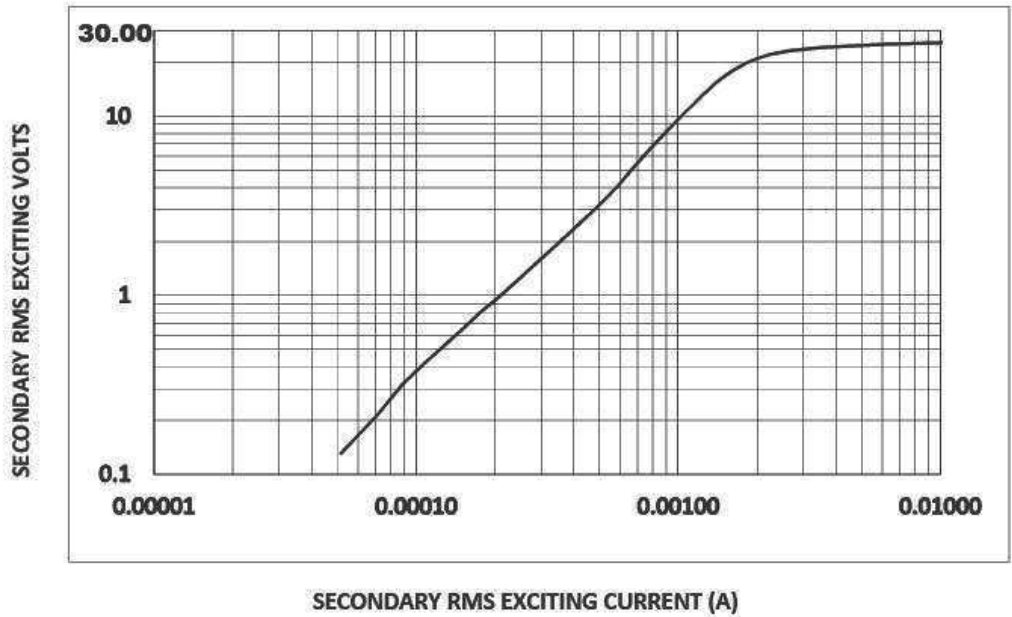
All dimensions are in mm  
 Linear dimensional tolerance ±0.2mm

Note : Un-Used pin → #3

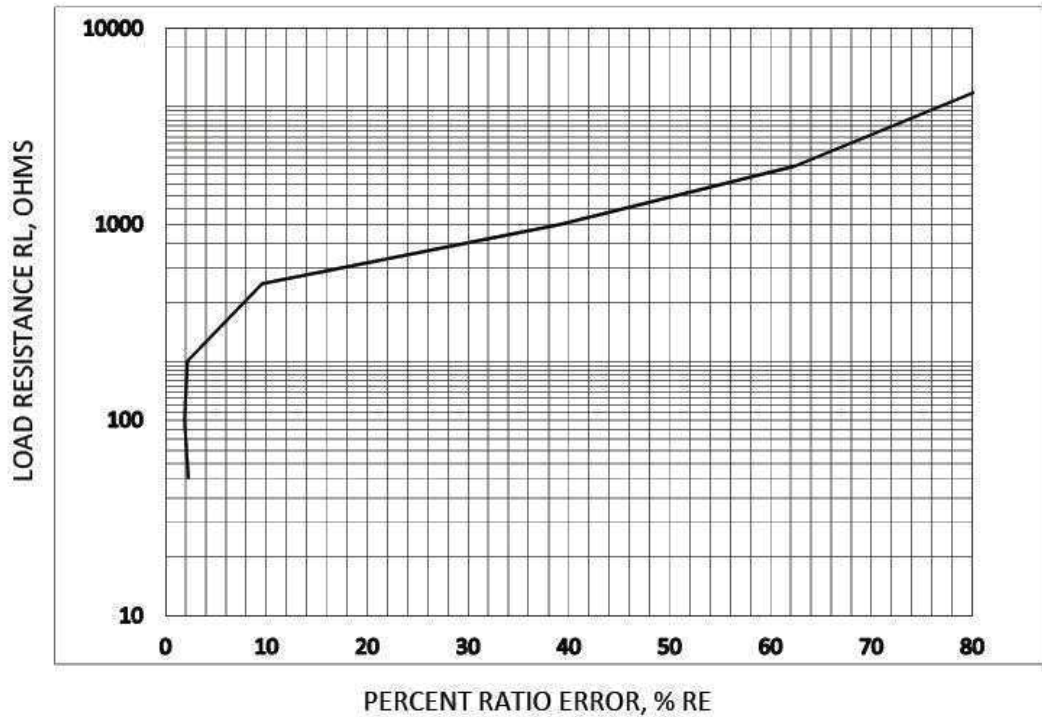
OUTPUT RESPONSE vs INPUT CURRENT @ RATED BURDEN :



TYPICAL EXCITATION CURVE :



RATIO ERROR (%) vs RATED BURDEN @ INPUT CURRENT :



TRAFO WEIGHT:

Approx. Weight = 0.0652 kg / pc

MARKING INFORMATION:

Amgis  
CT1075  
Yr/Wk code  
●  
Dot mark for Start pin identification

-----Initial Issue-----	1	0	Balaji. R	18-Nov'2015
Changes	Issue	Rev	Initial	Date