

Compensated High Current Choke, 1-phase



**Description**

- Current compensated choke
- 1-phase choke
- Flexible wire
- Flange for mounting onto printed circuit board
- Fully potted resin

**Standards**

- EN 60938
- UL 1283
- CSA 22.2 no 8

**Applications**

- Placed in front of frequency converter
- Stepper motor drives
- UPS-systems
- Inverter

**Weblinks**

[pdf datasheet](#), [html-datasheet](#), [General Product Information](#), [Approvals](#), [CE declaration of conformity](#), [RoHS](#), [CHINA-RoHS](#), [REACH](#), [Distributor-Stock-Check](#), [Detailed request for product](#)

**Technical Data**

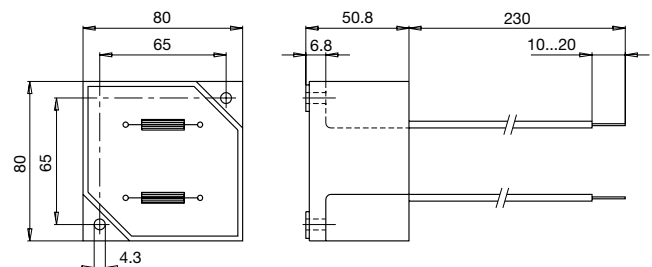
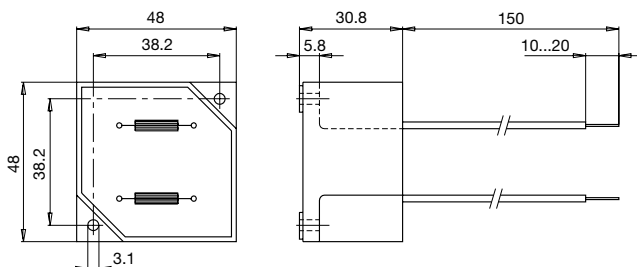
Rated voltage	up to 540 VAC	Test Voltage	2.5 kV, 50 Hz, 2 sec, winding to winding
	up to 760 VDC	Isolation Voltage	2.5 kV, 50 Hz, 2 sec, winding to ambient
Rated Current	10 - 50 A @ Ta 40 °C	Climatic Category	25/100/21 acc. to IEC 60068-1
Rated inductance	1.1 - 12 mH, Tol. -30% +50%	Allowable Operation Temp.	-25 °C to 100 °C
Power Operating Frequency	50 - 400 Hz		
Terminal Type	Flexible wire		
Weight	145 - 1865 g		
Material: Housing	UL 94V-0		
Sealing Compound	UL 94V-0		

Detailed information on product approvals, code requirements, usage instructions and detailed test conditions can be looked up in [General Product Information](#)

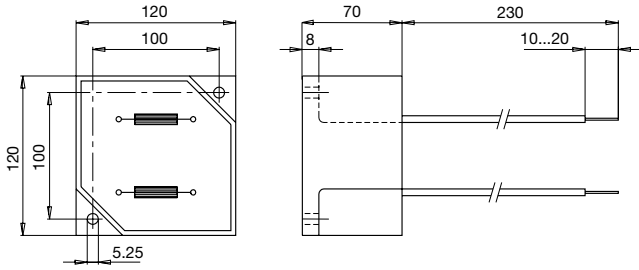
**Dimension**

Case 29-2W

Case 31-2W

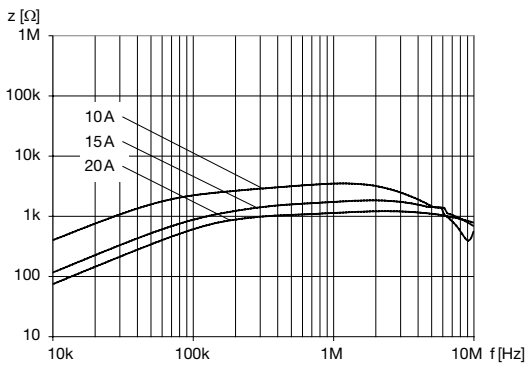


Case 33-2W

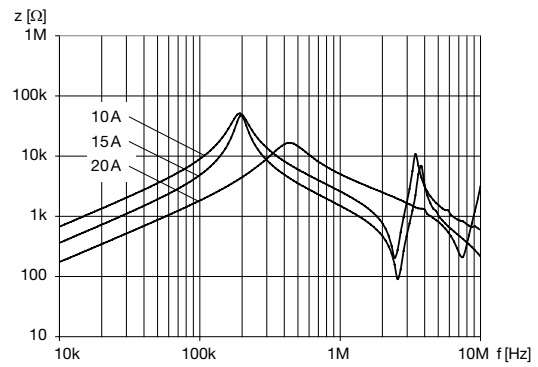


Impedance curves

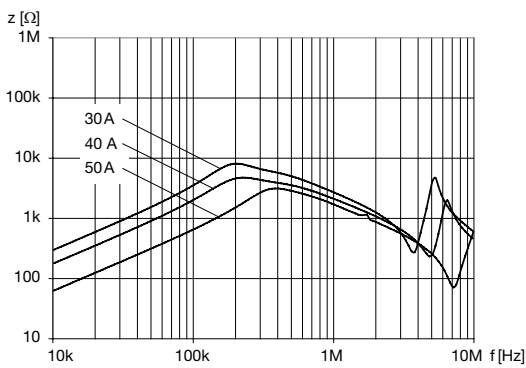
DKIP\_0229\_xxxx



DKIP\_0231\_xxxx



DKIP\_0233\_xxxx



All Variants

$I_n$ [A]	$L_n$ [mH]	$R_{Cu}$ [mΩ]	Power <sub>loss</sub> [W]	$f_{RES}$ [MHz]	Copper $\phi$ [mm]	Weight [g]	Housings	Packing unit [pcs.]	Order Number
10	5	18	3.6	0.35	1.25	145 g	29-2W	12	<a href="#">DKIP-0229-1005</a>
15	2	8	3.6	0.6	1.6	145 g	29-2W	12	<a href="#">DKIP-0229-1502</a>
20	1.1	6	4.8	2.5	1.8	145 g	29-2W	12	<a href="#">DKIP-0229-2001</a>
10	12	40	8	0.15	1.25	477 g	31-2W	2	<a href="#">DKIP-0231-1012</a>
15	5	17	7.6	0.33	1.6	525 g	31-2W	2	<a href="#">DKIP-0231-1505</a>
20	3	10	8	0.55	1.8	506 g	31-2W	2	<a href="#">DKIP-0231-2003</a>
30	5	12.5	22.5	0.26	2.24	1600 g	33-2W	1	<a href="#">DKIP-0233-3005</a>

$I_n$ [A]	$L_n$ [mH]	$R_{cu}$ [mΩ]	Power <sub>loss</sub> [W]	$f_{RES}$ [MHz]	Copper ø [mm]	Weight [g]	Housings	Packing unit [pcs.]	Order Number
40	3	6	19.2	0.3	1.5 x 4.5	1830g	33-2W	1	<a href="#">DKIP-0233-4003</a>
50	2	5	25	0.25	1.5 x 4.5	1865g	33-2W	1	<a href="#">DKIP-0233-5002</a>

Most Popular.

Availability for all products can be searched real-time:<http://www.schurter.com/en/Stock-Check/Stock-Check-SCHURTER>