



DIGI XBEE TO IP
GATEWAY WITH CLOUD
MANAGEMENT SERVICES



DIGI XBEE[®] GATEWAY FAMILY

Programmable gateway connects Digi XBee devices to cloud-based applications over cellular, Wi-Fi or Ethernet

The Digi XBee Gateway provides a low-cost Digi XBee to IP solution, featuring scalable remote configuration and management of Digi XBee networks with Digi Device CloudSM. By default, all Digi XBee data sent to the gateway is automatically available to online applications via Device Cloud. With a simple, open-source Python development environment, this gateway also enables custom applications to run locally while interfacing across existing Ethernet/Wi-Fi/cellular networks for WAN connectivity to cloud-based software applications.

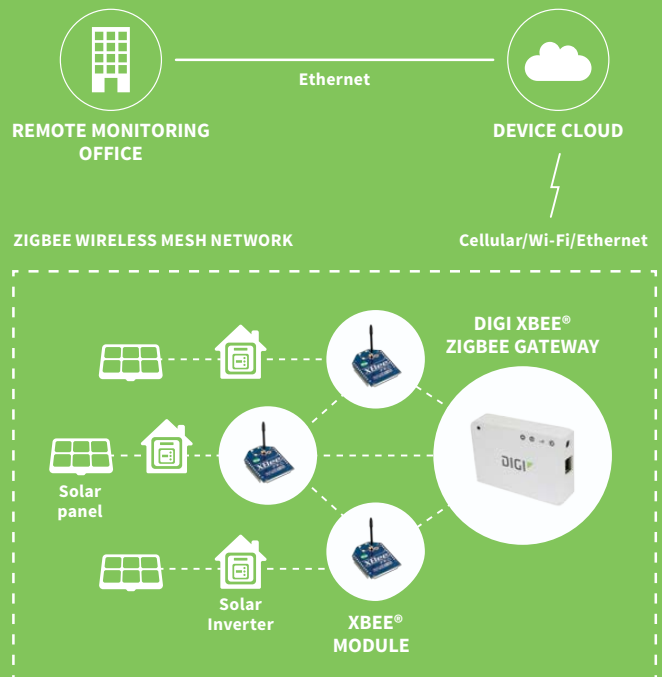
Digi XBee Gateway products can be managed remotely via Device Cloud, allowing users to remotely manage thousands of deployed devices, supporting features like remote firmware upgrades and event alarms.

The Digi XBee Gateway can be tested and developed using the Digi XBee ZigBee Cloud Kit, which fully integrates the Digi XBee Gateway, Digi XBee Module, Device Cloud and a sample web application into a cohesive internet-connected solution. This kit is a powerful tool that enables developers to create internet-connected prototypes in 30 minutes or less.

BENEFITS

- Open Source Python environment for custom application development on the gateway
- Out-of-box integration with Digi Device Cloud enables remote connectivity, configuration and management of Digi XBee networks
- Secure, scalable access to an unlimited number of remote Digi XBee-based devices
- Cellular, Wi-Fi and Ethernet WAN options for flexible broadband connectivity

APPLICATION EXAMPLE



RELATED PRODUCTS



Modules



Adapters



Sensors



Range
Extenders



Development
Kits

DIGI DEVICE CLOUD

CONNECTING ANY APPLICATION TO ANYTHING, ANYWHERE
YOUR BRAND, YOUR FIRMWARE AND CONFIGURATION

Digi Device Cloud is a public, platform-as-a-service (PaaS) that allows organizations to redefine the way they run their business and transform their customers' experience through remote management of assets and development of solutions to reduce costs and drive efficiencies.

Device Cloud enables organizations to connect any device, sensor or machine, located anywhere in the world, to the internet and doing so provides new insights to drive those business efficiencies.

Businesses can gain new intelligence through data visualization, increase efficiency of operations by managing devices en masse, and keep their data safe in the cloud with the Device Cloud platform.

BENEFITS

- Out-of-the-box compatibility with Digi hardware
- Easy application integration and open APIs
- No costly infrastructure to operate or maintain
- Multi-tenant, cloud-based architecture
- Manage devices en masse
- Two-way device to cloud communication
- Asynchronous event updates and alerts
- Reliable, scalable and secure
- Broadcast network grade service ability - operating 99.9% or greater
- Dedicated Security Office

PRIVATE LABELING

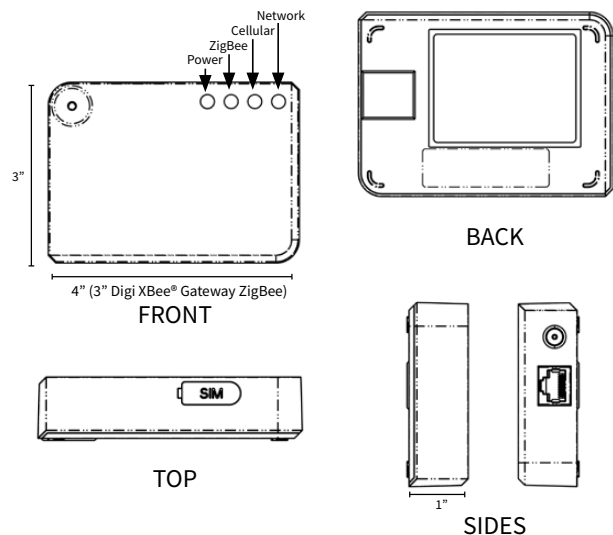
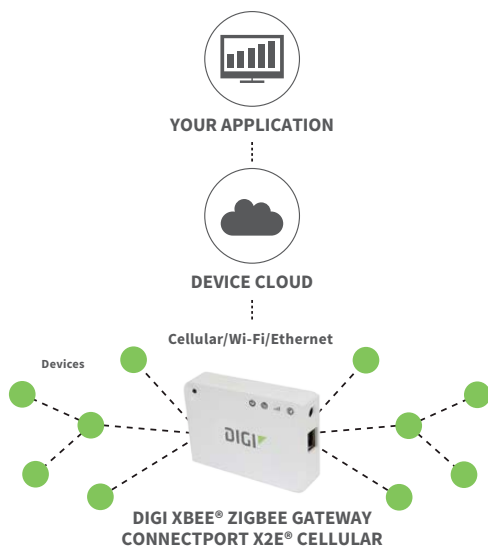
YOUR BRAND, YOUR FIRMWARE AND CONFIGURATION

Digi knows that a gateway is only one part of our customers' complex market offering. We are therefore pleased to offer a simple private branding process as a value-add to the Digi XBee Gateway product family.

For a fixed initial charge and a minimum order commitment, Digi customers get a custom part number with their brand, fixed (or "frozen") firmware, and custom default configuration.

BENEFITS

- Place your brand on the enclosure
- Pre-load your specific firmware and configuration
- All for a fixed price



SPECIFICATIONS

Digi XBee® Gateway

| Digi XBee® Gateway - Cellular

GENERAL		
MANAGEMENT	Secure enterprise management via Device Cloud	
PROTOCOLS	UDP/TCP, DHCP	
LEDS	Power, Network (LAN/WAN), ZigBee (HAN/PAN)	Power, Network (LAN/WAN), ZigBee (HAN/PAN), Cellular signal strength
SECURITY	SSL tunnels, WEP-40, WEP-104, WPA/WPA2, Authentication with PSK and EAP	SSL tunnels, Cellular network security
DIMENSIONS (L X W X H)	3 in x 3 in x 1 in (7.62 cm x 7.62 cm x 2.54 cm)	3 in x 4 in x 1 in (7.62 cm x 10.16 cm x 2.54 cm)
DEVELOPMENT		
PYTHON VERSION	2.7.1	
OPERATING SYSTEM	Digi Embedded Linux	
DIGI XBEE GATEWAY APPLICATION	Digi XBee data sent to the gateway is automatically available to online applications via Device Cloud	
PROCESSOR AND MEMORY (VARIES BY FIRMWARE AND OS VERSION)	Freescale i.MX28, 20 MB RAM, 10 MB file space	
ZIGBEE		
ZIGBEE STACK	ZigBee PRO Feature Set, Ember EM357	
ZIGBEE MODULE	Digi Digi XBee® ZB SMT (S2C)	
TRANSMIT POWER/RECEIVE SENSITIVITY	Worldwide version: Digi XBee ZB SMT transmit power 6.3 mW (+8 dBm); Receiver sensitivity (1% PER) -102 dBm; North American version: Digi XBee-PRO® ZB SMT transmit power: 63 mW (+18 dBm); Receiver sensitivity (1% PER) -102 dBmP	
CELLULAR		
CELLULAR MODULE	N/A	Telit 910 Series
GSM BANDS	N/A	800/850/900/AWS/1900/2100 MHz 3G/UMTS
CDMA BANDS	N/A	800/1900 MHz 1x RTT
WI-FI		
802.11	b/g/n	N/A
DATA RATE	Up to 72.2 Mbps	N/A
TRANSMIT POWER	18 dBm typical (varies by mode, channel and region)	N/A
RECEIVER SENSITIVITY	Up to -87 dBm @ 11 Mbps	N/A
MODES	AP Client Modes only; Access Point Mode not supported	N/A
ETHERNET		
PORTS	1 RJ-45 port	
PHYSICAL LAYER	10/100Base-T	
ROUTING	Ethernet port designed for configuration and WAN backhaul	
POWER REQUIREMENTS		
POWER SUPPLY	5 VDC power supply with barrel connector included	
POWER CONSUMPTION	Typical: 1.2 W, Max: 2.5 W	Typical: 3.5 W, Max: 15 W
ENVIRONMENTAL		
OPERATING TEMPERATURE	0° C to 40° C (32° F to 104° F)	
RELATIVE HUMIDITY	5% to 95% (non-condensing)	
REGULATORY APPROVALS		
MOBILE CERTIFICATIONS (GSM)	N/A	AT&T
MOBILE CERTIFICATIONS (CDMA)	N/A	Verizon and Sprint
SAFETY	UL 60950-1, CSA C22.2 and EN 60950-1	
EMISSIONS/IMMUNITY/TRANSMITTER	CE, FCC Part 15 (Class B), IC, ETSI	

PART NUMBERS	DESCRIPTION
XKA2C-Z7T-U	Digi XBee ZigBee Cloud Kit
XKA2C-Z7T-W	Digi XBee ZigBee Cloud Kit (International)
X2E-Z3C-E1-A	Digi XBee Gateway - ZigBee to Ethernet
X2E-Z3C-E1-W	Digi XBee Gateway - ZigBee to Ethernet (International)
X2E-Z3C-W1-A	Digi XBee Gateway - ZigBee to Ethernet/Wi-Fi
X2E-Z3C-W1-W	Digi XBee Gateway - ZigBee to Ethernet/Wi-Fi (International)
X2E-Z4C-D2-A	Digi XBee Gateway - ZigBee to Verizon 3G
X2E-Z4C-H1-A	Digi XBee Gateway - ZigBee to GSM 3G (AT&T)
X2E-Z3C-H2-W	Digi XBee Gateway - ZigBee to GSM 3G (International)
X2E-Z4C-D1-A	Digi XBee Gateway - ZigBee to Sprint 3G

FOR MORE INFORMATION
PLEASE VISIT WWW.DIGI.COM

DIGI SERVICE AND SUPPORT / You can purchase with confidence knowing that Digi is always available to serve you with expert technical support and our industry leading warranty. For detailed information visit www.digi.com/support.

© 1996-2017 Digi International Inc. All rights reserved.
All trademarks are the property of their respective owners.

91002791
B3/317

DIGI INTERNATIONAL WORLDWIDE HQ
877-912-3444 / 952-912-3444 / www.digi.com

DIGI INTERNATIONAL FRANCE
+33-1-55-61-98-98 / www.digi.fr

DIGI INTERNATIONAL JAPAN
+81-3-5428-0261 / www.digi-intl.co.jp

DIGI INTERNATIONAL SINGAPORE
+65-6213-5380

DIGI INTERNATIONAL CHINA
+86-21-50492199 / www.digi.com.cn

